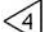


DRAWING NO.  
SC200297

WIRE RANGE	CATALOG NUMBER	FIG. NO.	DIMENSIONS IN INCHES			INSTALLATION TOOLING	WIRE STRIP LENGTH
			L MAX.	O.D. MAX.	MAX. DIA. 		
22-18	YSV18-H	2	.91 [23]	.13 [3]	.12 [3]	MR8-G98	1/4
	YSV18	1	.66 [17]				
20-14	YSV14-H	4	1.00 [25]	.17 [4]	.15 [4]	Y10D	
	YSV14	3	.66 [17]			---	
12-10	YSV10-H	4	1.12 [28]	.22 [6]	.19 [5]	Y8MRB	
	YSV10	3	.79 [20]			---	

REV.	DATE	DESCRIPTION	BY	C'K'D.
1	2/10/97	REDRAWN TO CAD, ADDED NOTES 4 & 5, ADDED MKTG. AND Q.A. APPROVAL SIGNATURES. (PER PCN 3008)	PL	JLM

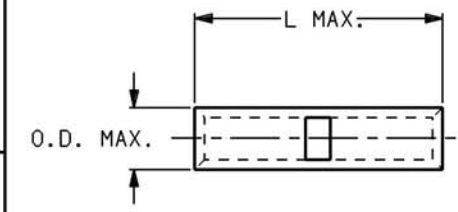


FIG. 1

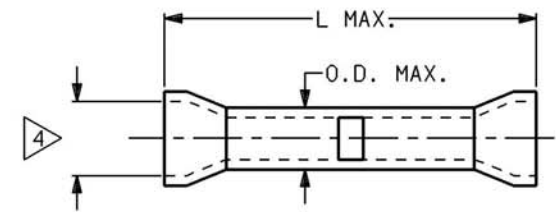


FIG. 2

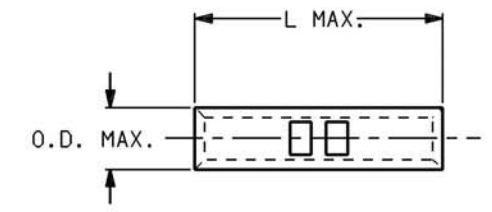


FIG. 3

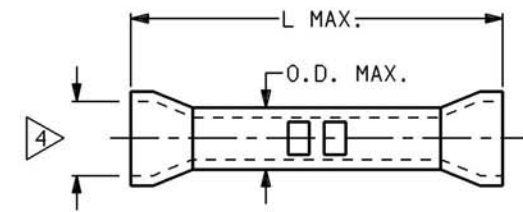
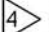



FIG. 4

NOTES:

1. MATERIAL: COPPER TUBING.
2. FINISH: TIN PLATED.
3. CONNECTORS ARE UL AND CSA APPROVED.
4.  SHROUD I.D. ACCEPTS MAX. INSULATION DIAMETER SHOWN IN TABLE.
5. DIMENSIONS IN [ ] ARE IN MILLIMETERS ROUNDED OFF TO THE NEAREST MILLIMETER, UNLESS OTHERWISE NOTED, AND ARE FOR REFERENCE ONLY.

TYPICAL LETTERING

REFERENCE: SD10058

<b>UNINSULATED HYLINK™</b>			
CAT NO. YSV--, YSV--H (TABLE)		SCALE N/A	
DRWN: H.C.	12/6/86	CHECKED: J.M.	12/9/86
DSGN APPVL: A.C.	12/10/86	MFG APPVL: N/A	
Q.A. APPVL: D. VARIO	9/13/96	MKTG APPVL: G. SCHWEBLER	9/10/96
CAD FILE: SC200297-SHT01		PH REF: N/A	
		MOL REF: N/A	
		PROJECT: D050886	
DRAWING NO.		REV	
SC200297		1	
SHEET 1 OF 1			

REV. 061995